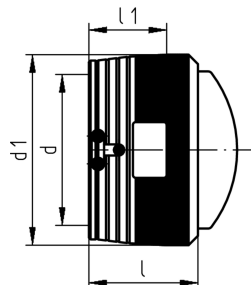


# Data sheet

valid from: 3/25/17



## End cap

- PE 100 SDR 11 (ISO S5)
- 10 bar Gas / 16 bar Water
- 4 mm pin connectors
- Limited path fusion indicators

| d<br>(mm) | Code               | SP | Weight<br>(kg) | d1<br>(mm) | L<br>(mm) | L1<br>(mm) |
|-----------|--------------------|----|----------------|------------|-----------|------------|
| 160       | <b>753 961 617</b> | 1  | 1.782          | 200        | 143       | 90         |
| 200       | <b>753 961 619</b> | 1  | 3.585          | 250        | 162       | 104        |
| 225       | <b>753 961 620</b> | 1  | 4.500          | 280        | 170       | 112        |
| 250       | <b>753 961 621</b> | 1  | 6.300          | 310        | 185       | 123        |

The technical data are not binding. They neither constitute expressly warranted characteristics nor guaranteed properties nor a guaranteed durability. They are subject to modification. Our General Terms of Sale apply.

Georg Fischer Piping Systems Ltd, Postfach, CH-8201 Schaffhausen/Switzerland

Phone +41 -(0)52-631 1111

e-mail: [info.ps@georgfischer.com](mailto:info.ps@georgfischer.com)

Internet: <http://www.gfps.com>